



**Kaz Van Wyk**  
0835572843  
kaz@realgroup.co.za

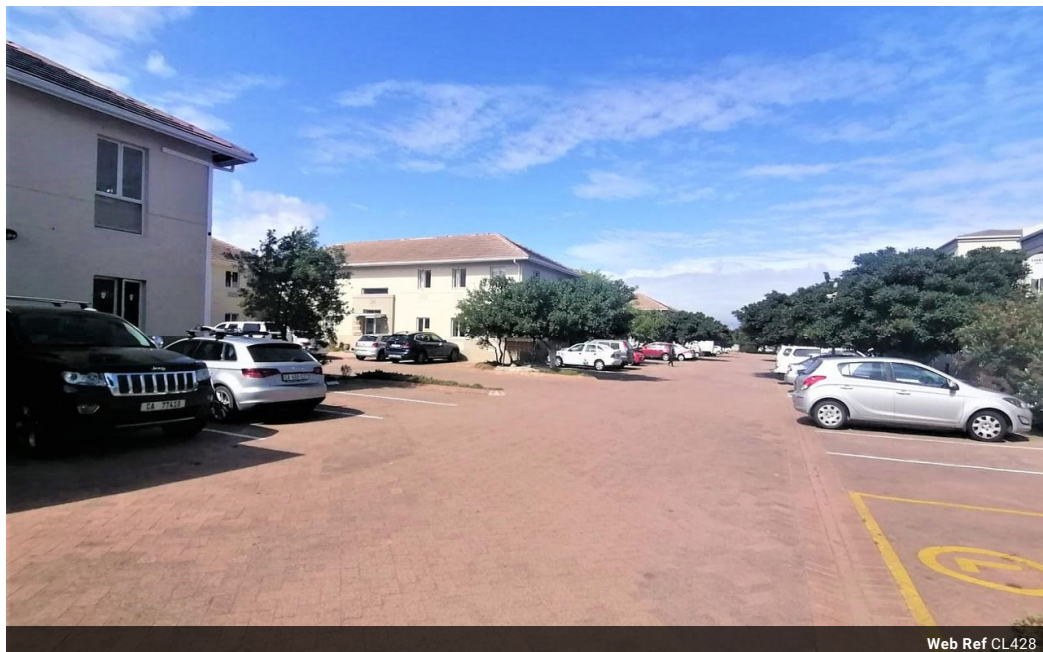


**Ryan Van Wyk**  
0825560051  
ryan@realgroup.co.za

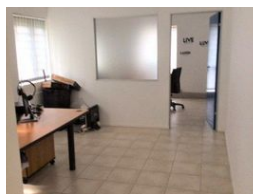
Contact **Western Cape Office**

**021 5571428**

15 Hof Street, Table View



Web Ref CL428



**R900,000**



### WELL LOCATED Commercial unit in a SECURE office park

Positioned in a highly sought after office block.  
Each unit is 70m<sup>2</sup> in size, there is another unit available which if bought together could make up 140sqm in office space.  
There is remote controlled access and security on site, as well as communal areas being tidied.

LEVIES: R 1 400 / month / unit

RATES: R 790 / month / unit

ELECTRICITY: Pre paid

Each units come with THREE exclusive use parking bays, a kitchenette and bathroom,  
The configuration of the offices varies in each unit depending on the tenant requirements.

The subject property is located on the corner of Link Road and Village Walk, within the suburb of Parklands. Village Walk is within very close proximity to Koeberg Road / Sandown Road which connects to N7 and the N1. This allows efficient access to the

### Features

**Zoning** Commercial

#### Sizes

Floor Size 70m<sup>2</sup>