



**Karin Rodwell**  
0716781788  
karin@realgroup.co.za

Contact Blouberg

021 5571428

15 Hof Street, Table View

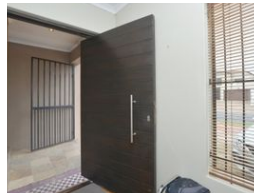
## 4 Bedroom House Sold in Parklands East, Parklands

**SOLD**



SOLE MANDATE

Web Ref 7084533



**R2,625,000**

 4  4  2

**Monthly Bond Repayment** R26,649.76

Calculated over 20 years at 10.75% with no deposit.

**Transfer Costs** R127,887.00 **Bond Costs** R40,300.00

These calculations are only a guide. Please ask your conveyancer for exact calculations.

**Monthly Rates** R1,211

### Spacious 4 Bed Family Home and Dual Living, Parklands East

Sole & Exclusive Mandate

Welcome to this EXPANSIVE and well-appointed family home, offering both COMFORT and VERSATILITY on the borders of Sandown and Parklands.

The main house features an INVITING LOUNGE, highlighted by a striking brick feature wall and stylish laminated flooring. At the heart of the home lies the HUGE KITCHEN, a true standout with two built-in ovens, a six-plate hob, and extensive cupboard space that seems endless. A double sink and single water point add to its functionality, making this kitchen a dream for home chefs. Adjacent to the kitchen is the DINING ROOM, thoughtfully positioned for easy meal service and ideal for hosting family gatherings.

For added convenience, there is a guest bathroom located off the dining room, ensuring practicality for entertaining and everyday living. A hallway leads...

### Features

**Pets Allowed** Yes

#### Interior

Bedrooms	4
Bathrooms	4
Kitchens	2
Recep. Rooms	4

#### Exterior

Garages	2
Carports / Parkings	2
Security	Yes
Pool	Yes

#### Sizes

Land Size	569m <sup>2</sup>
-----------	-------------------