



**Azalea Enderli**  
0824404092  
azalea@realgroup.co.za



**Sean Britt**  
0836528213  
sean@realgroup.co.za

Contact **Western Cape Office**

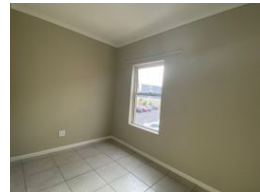
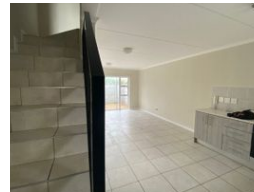
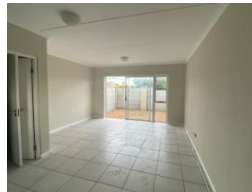
**021 5571428**

15 Hof Street, Table View



SOLE MANDATE

Web Ref 6237811




**R1,299,000**

**Monthly Bond Repayment** R13,187.82

Calculated over 20 years at 10.75% with no deposit.

**Transfer Costs** R37,587.00    **Bond Costs** R27,105.00

These calculations are only a guide. Please ask your conveyancer for exact calculations.

 2     3

### IF YOU ARE JUST STARTING OUT

This 2 bedroomed 2 bathroomed Duplex is a great place to END UP!

MODERN! LIGHT! BRIGHT!

Sliding doors open onto small PRIVATE garden from the LIVING ROOM. Open plan kitchen with fitted oven and hob with fitted cupboards .

En-suite Shower WC and Basin

Family bathroom with Bath and shower WC and Basin

Allocated parking bay

### Features

#### Interior

Bedrooms	2
Bathrooms	3
Kitchens	1
Recep. Rooms	1

#### Exterior

Carports / Parkings	1
Security	No
Pool	No