

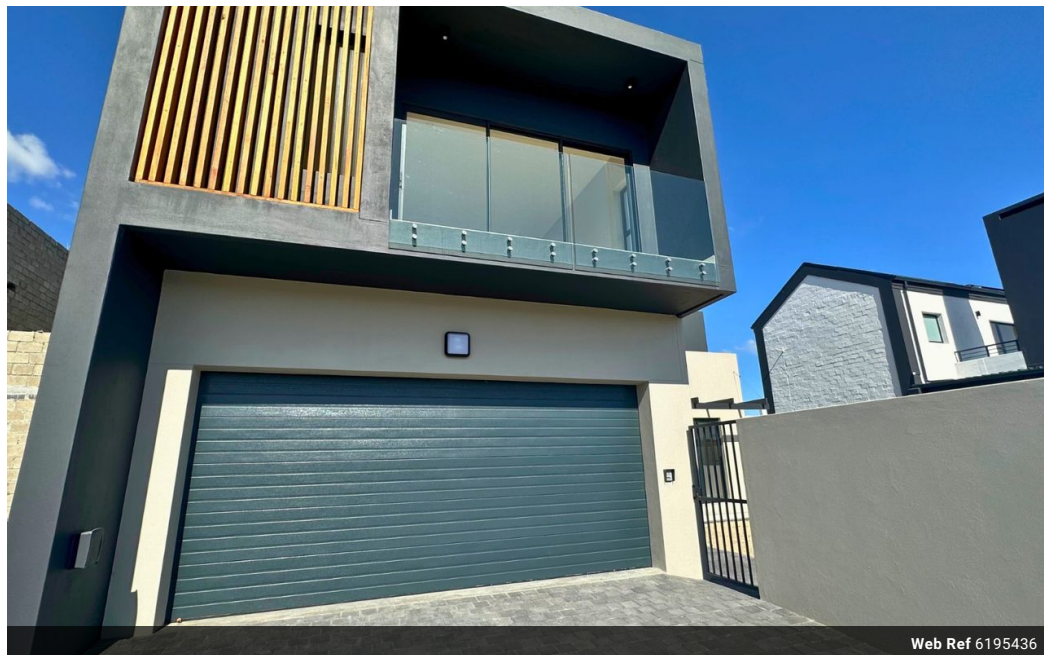


Kieron Paterson
0833825094
kieron@realgroup.co.za

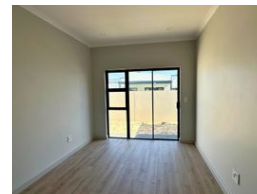
Contact Western Cape Office

021 5571428

15 Hof Street, Table View



Web Ref 6195436



R4,795,000

🛏️ 4 🚿 3.5 🚗 2

Monthly Bond Repayment R48,680.23

Calculated over 20 years at 10.75% with no deposit.

Transfer Costs R377,627.00 **Bond Costs** R59,150.00

These calculations are only a guide. Please ask your conveyancer for exact calculations.

Monthly Levy R300 **Monthly Rates** R1,200

Stunning Listing in Sandown with No Transfer Fees

Experience luxury living in this brand-new 4-bedroom home in the prestigious Sandown neighborhood. With beautiful finishes and no Transfer Duty.

Inside, you'll find four stunning bedrooms, three bathrooms, and a guest toilet. The bright lounge and dining area connect to a built-in BBQ and a front yard through stackable doors. The kitchen is a masterpiece with a 5-plate gas stove, eye-level ovens, soft-touch cabinets, and a scullery with direct garage access.

A downstairs bedroom with an en-suite is perfect for guests and leads to the rear yard. Upstairs, three spacious bedrooms await. The main suite has a private balcony, ample storage, and a luxurious en-suite bathroom. The remaining two bedrooms have large closets and a shared bathroom with a sleek shower. Laminated flooring adds elegance to all the bedrooms.

The...

Features

Pets Allowed		Yes			
Interior		Exterior		Sizes	
Bedrooms	4	Garages	2	Floor Size	272m²
Bathrooms	3.5	Carports / Parkings	2	Land Size	325m²
Kitchens	1	Security	Yes		
Recep. Rooms	2	Pool	No		
Studies	1				

