

**Andre Beech**

0714252357  
andre@realgroup.co.za



Contact Southern Suburbs

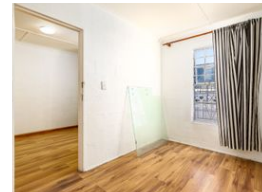
021 5571428

1st Floor  
Block B  
Black River Park North  
Observatory

## 3 Bedroom House For Sale in Eastridge



Web Ref 6813103



**R700,000**

3 1 1

**Monthly Bond Repayment** R7,106.60

Calculated over 20 years at 10.75% with no deposit.

**Transfer Costs** R23,730.00 **Bond Costs** R17,680.00

These calculations are only a guide. Please ask your conveyancer for exact calculations.

**Monthly Rates** R98

### 3 Bedroom house for sale in Eastridge, Mitchell's Plain

This property is located in Eastridge, Mitchell's Plain.

It features a main house with 3 spacious bedrooms with one of the bedrooms having access to the enclosed back yard area. The bathroom includes a basin, toilet and shower for your convenience. The kitchen is fitted with built-in cabinets including oven and hob stove with extractor fan and double sink. The living room is spacious. There is parking for up to 3 vehicles covered with a carport and garage door. The property is secured with gates and burglar bars. The back yard is completely enclosed and perfect for kids to play or to entertain guests.

The property is located close to shops, schools, public transport and places of worship.

I look forward to assisting you.

### Features

#### Interior

Bedrooms	3
Bathrooms	1
Kitchens	1
Recep. Rooms	1

#### Exterior

Garages	1
Carports / Parkings	2
Security	Yes
Pool	No

#### Sizes

Floor Size	59m <sup>2</sup>
Land Size	180m <sup>2</sup>