

Andre Beech

0714252357

andre@realgroup.co.za



Contact Southern Suburbs

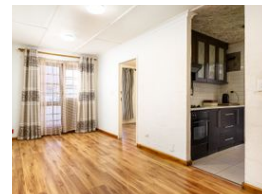
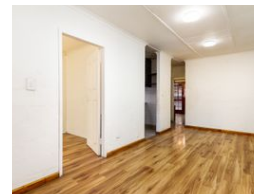
021 5571428

1st Floor
Block B
Black River Park North
Observatory

3 Bedroom House For Sale in Eastridge



Web Ref 7154516



R670,000

Monthly Bond Repayment R6,802.03

Calculated over 20 years at 10.75% with no deposit.

Transfer Costs R23,730.00

Bond Costs R17,680.00

These calculations are only a guide. Please ask your conveyancer for exact calculations.



3 Bedroom house for sale in Eastridge, Mitchell's Plain

This charming house is available in Eastridge, Zebra Crescent.

The property offers 3 Bedrooms, fitted kitchen with oven, hob and extractor an. Family Bathroom with Shower, Toilet and Basin. A decent size lounge area to relax. The yard is fully enclosed and offers safe parking for up to 3 vehicles behind locked gates. The property has burglar bars and is fibre ready.

The property is conveniently located close to schools, public transport, places of worship, hospitals and shopping malls.

Contact me for a viewing.

Features

Interior		Exterior		Sizes	
Bedrooms	3	Garages	3	Floor Size	61m²
Bathrooms	1	Security	Yes	Land Size	180m²
Kitchens	1	Pool	No		
Recep. Rooms	1				