

Andre Beech

0714252357

andre@realgroup.co.za



Contact Southern Suburbs

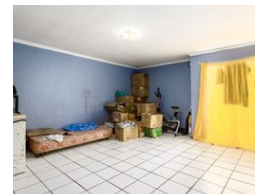
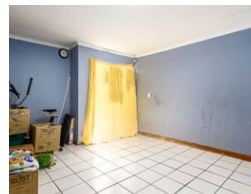
021 5571428

1st Floor
Block B
Black River Park North
Observatory

3 Bedroom House For Sale in Westridge



Web Ref 6728792



R899,000

3 Bedrooms 1 Bath 1 Garage

Monthly Bond Repayment R9,279.37

Calculated over 20 years at 11% with no deposit.

Transfer Costs R28,244.00

Bond Costs R21,450.00

These calculations are only a guide. Please ask your conveyancer for exact calculations.

Monthly Rates R175

3 Bedroom house For Sale in Westridge, Mitchell's Plain

This property is located in Westridge, Mitchell's Plain and is an enticing option for both families and investors.

It features a main house with 3 spacious bedrooms, all tiled floors. The bathroom includes a basin, toilet, bath and shower for your convenience. The kitchen is fitted with built-in cabinets including oven and hob stove with extractor fan. The living room is spacious and has access to the back yard. There is parking for one vehicle covered with a carport and gates. There is one section of the garage that is used for a shop that generates an income of R4000 per month. It can easily be reverted back to a garage for more vehicle space. The property is secured with gates and burglar bars.

The property is located close to shops, schools, public transport and places of worship.

I look forward to assisting you.

Features

Interior

Bedrooms	3
Bathrooms	1
Kitchens	1
Recep. Rooms	1

Exterior

Garages	1
Security	Yes
Pool	No

Sizes

Floor Size	76m²
Land Size	201m²