



Karen Heeger
083 389 5911
karen@realgroup.co.za

Contact Southern Suburbs

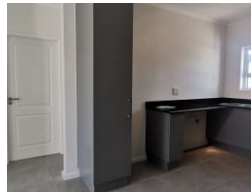
021 5571428

1st Floor
Block B
Black River Park North
Observatory

NEW



Web Ref 7023058



R14,500 pm

Lease Period None Availability 01 Jun 2025 Deposit - Annual Escalation -

 2  1  1

2 BEDROOM SIMPLEX HOME IN SECURE COMPLEX

Keswick Village is tucked away in the quiet, well-established suburb of Elfindale. Situated between Diep River and Heathfield, this suburb has for years been the hidden gem of the Southern suburbs, offering suburban living in a secure and neat complex.

The established neighborhood is perfectly suited for couples, young families, and retiring households.

The 2-bedroom simplex is 65m2 with a garage and parking bay (21m2), semi-detached.

The interiors consist of 2 bedrooms, open-plan living with modern fitted kitchens, and well-appointed bathrooms.

The unit comes with its own private backyard, garage, and fibre-ready internet connection (additional charge for tenant account)
The home is close to schools, shopping centres, and major transport routes.

Occupation Date: 01 June 2025 (12 month contract)

Rental fee:...

Features

| Interior | | Exterior | | Sizes | |
|--------------|---|----------|-----|------------|------|
| Bedrooms | 2 | Garages | 1 | Floor Size | 65m² |
| Bathrooms | 1 | Security | Yes | | |
| Kitchens | 1 | Pool | No | | |
| Recep. Rooms | 1 | | | | |